

# M400



DECT



Dual-cell system

Power over  
Ethernet (PoE)Security (TLS &  
SRTP)

OTA Updates



Directory

## Base station for seamless business mobility

The M400 DECT base station offers the full range of telephony business features. With 2 base stations forming a DECT dual cell system for up to 20 phones and 20 parallel calls, the M400 is suitable for medium-sized offices or shops. For Cloud and VoIP PBX partners, the M400 offers remote

maintainability and zero-touch deployment. The M400 complies with the latest encryption standards and shares the same architecture as the M900 multicell system for the latest software and security updates.

## Product variants



**M400** | EU & UK | PN  
00004587



**M400** | Americas | PN  
00004588



**M430** | EU | PN  
00004589



**M430** | UK | PN  
00004590

## Basics

- Product information
  - DECT base station M400 | Dual-cell installation
  - Colour: white
- Placement: indoor, desktop, wall mounting
- Antenna diversity: 2 internal omni-directional antennas

## Dimensions and weight

- Dimensions (H × W × D, approx.)
  - 112 mm × 90 mm × 36 mm
- Weight (approx.)
  - 170 g

## Indicators and keys

- Multi-purpose status indication: 1 multicolour LED
- 1 dedicated function key: Reset

## Audio codecs and features

- Audio codecs: G.711 (A-law,  $\mu$ -law), G.722, G.726, G.729
- Codec negotiation
- Codec switching

## Interfaces and connections

- Power options
  - [Power over Ethernet \(PoE\)](#): IEEE 802.3af, class 2

- Power adapter:<sup>1</sup> 100 - 240 V AC, 50 - 60 Hz | 5 V DC (SELV), 2 A, 10 W
- Wired interfaces
  - Power adapter: coaxial power connector (socket)
  - Network connectivity (LAN): RJ45-8P8C socket → Ethernet 10/100 Mbit/s
- Wireless interfaces
  - DECT<sup>2</sup>

## User interfaces and setup

- [Configuration and setup via menu-driven web user interface \(WUI\)](#)
- [Automatic configuration via provisioning](#)
  - Loading of settings and firmware via HTTP, HTTPS, TFTP
  - Secure provisioning with preinstalled certificate
  - Cloud Zero-Touch Provisioning
- Localization
  - [Languages](#)
  - Time zone, dial tone
- Diagnostic
  - DECT messages, alarms, location
  - List of registered mobile handsets, repeaters, location gateways
- Related features
  - XML Minibrowser support for Snom DECT multicell systems
  - Compatible handset feature RSSI tool, no additional measurement equipment needed

## Directory support

- Local directory with up to 3,000 entries
- LDAP (server-based directory)
- XML phonebook support

## DECT technology and features

- Standard: DECT<sup>2</sup>
  - Authentication/encryption of base and handset
  - Seamless handover
  - Wideband audio
- Frequency band
  - Europe: 1,880 - 1,900 MHz
  - USA: 1,920 - 1,930 MHz
  - Latin America: 1,910 - 1,930 MHz
- Output power
  - Europe: < 250 mW
  - USA: < 100 mW
  - Level (dbm): 14, 17, 20, 24
- Coverage
  - Up to 50 m indoor range
  - Up to 300 m outdoor range
- Single-cell installation
  - Handsets: up to 20
  - Repeaters: up to 6
  - Narrowband calls: up to 10
  - Wideband calls: up to 5 (G.722)
- Dual-cell installation
  - Handsets: up to 20
  - Repeaters: up to 12
  - Narrowband calls: up to 20
  - Wideband calls: up to 10 (G.722)
- Software upgrade over the air (SUOTA)

## Networking technologies and protocols

- Network technologies
  - VLAN (IEEE 802.1q)

- Secure VoIP protocols
  - SIPS (SIP over TLS), SRTP
- Network protocols
  - DHCP, NTP, LLDP-MED, HTTP
- Secure network protocols
  - TLS V1.2, HTTPS
- Quality of Service (QoS)
  - ToS

## Environmental conditions

- Operating ambient temperature
  - -10 °C - +50 °C

## Package contents

- Hardware
  - DECT base station M400
- Documentation
  - [Quick Installation Guide](#)
  - Information sheets (security, standards)

## Interoperability

- Certified VoIP partner

## Snom accessories and compatible devices

- Power adapter: [Snom 10W PSU](#)
  - EU & UK: PN 00004570
  - Americas: PN 00004571
- PoE injector
  - A5E (PN 00004679)
- DECT repeater [M6](#)
  - EU / Americas: PN 00004586
  - UK: PN 00004639
- Handsets
  - M25 (PN 00003987), M30 (PN 00004607), M65 (PN 00003969), M70 (PN 00004423), M80 (PN 00004424), M85 (PN 00004189), M90 (PN 00004425)

## Series overview



M25



M30



M65



M70



M80



M85



M90



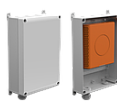
M400



M700 (EoL)<sup>3</sup>



M900



M900 Outdoor



M6



M9B



M9T

<sup>1</sup> If PoE is not available

<sup>2</sup> DECT devices manufactured for the USA and Canada are marketed as DECT 6.0

<sup>3</sup> EoL (End-of-life)

## Disclaimer

Further information: [Snom M400 webpage](#) | [Snom Service Hub](#) | [User manual](#) | [Type approval](#) | [Warranty information](#) | [Company locations](#)

Snom, the names of Snom products, and Snom logos are trademarks owned by Snom Technology GmbH. All product specifications are subject to change without notification. Snom Technology GmbH reserves the right to revise and change this document at any time, without being obliged to announce such revisions or changes beforehand or after the fact. Although due care has been taken in the compilation and presentation of the information in this document, the data upon which it is based may have changed in the meantime. Snom therefore disclaims all warranties and liability for the accurateness, completeness, and currentness of the information published, except in the case of intention or gross negligence on the part of Snom or where liability arises due to binding legal provisions.