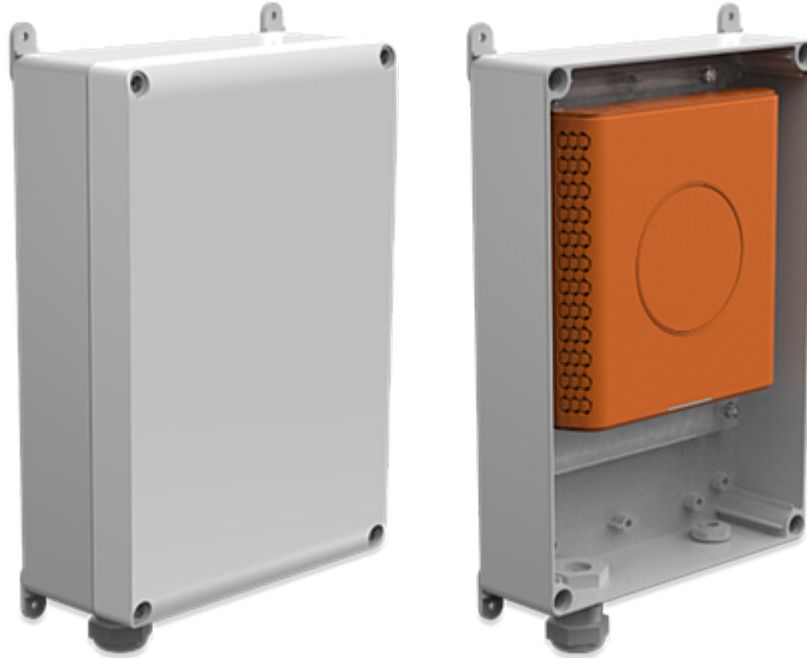


# M900 Outdoor



DECT

Multicell  
systemCertified for  
outdoor useImpact  
resistanceAlarm  
server  
compatibilityBeacon  
supportPower over  
Ethernet  
(PoE)Security  
(TLS &  
SRTP)OTA  
Updates

## The outdoor DECT base for all weather conditions

The Snom M900 Outdoor base enables professional and modern multi-cell DECT technology to operate outdoors. The base is IP55 certified and insensitive to dust, splash and rain water. Protected by durable housing reliable in any weather, the M900 Outdoor is versatile in office buildings, warehouses or hospitals.

The electronic components of the base station have been treated so that they are resistant to extreme temperatures, bacteria and moisture. Technically, the base is identical to the Snom M900.

## Basics

- Product information
  - DECT multicell base station | PN 00004478
  - Colour
    - Base station: orange
    - Housing: light grey
- Placement: outdoor, indoor, wall mounting, ceiling mounting
- Equipment
  - Antenna diversity: 2 internal omni-directional antennas
  - Housing: large temperature range, UV, impact (IK08) and water (UL746C) protected, IP55 rated

## Dimensions and weight

- Dimensions (L x W x D, approx.)
  - Base station: 144 mm × 140 mm × 35 mm
  - Housing: 300 mm × 175 mm × 80 mm
- Weight (approx.)
  - 1.1 kg

## Indicators and keys

- 1 multicolour LED Multi-purpose status indication
- 1 dedicated function key: Reset

## Audio codecs and features

- Audio codecs
  - G.711 (A-law,  $\mu$ -law), G.722 (5/4), G.726 (10/8)
  - G.729 (10/8), BV32 (10/8), Opus (8)<sup>3</sup>
- Codec negotiation
- Codec switching

## Interfaces and connections

- Power options
  - [Power over Ethernet \(PoE\)](#): IEEE 802.3af, class 2

- Power adapter:<sup>2</sup> 100 - 240 V AC, 50 - 60 Hz | 5 V DC (SELV), 2 A, 10 W
- Wired interfaces
  - Power adapter: coaxial power connector (socket)
  - Network connectivity (LAN): RJ45-8P8C socket → Ethernet 10/100 Mbit/s
- Wireless interfaces
  - DECT<sup>4</sup>

## User interfaces and setup

- [Configuration and setup via menu-driven web user interface \(WUI\)](#)
- [Automatic configuration via provisioning](#)
  - Loading of settings and firmware via HTTP, HTTPS, TFTP
  - Secure provisioning with preinstalled certificate
- Localization
  - [Languages](#)
  - Time zone, dial tone
- Related features
  - Compatible handset feature RSSI tool, no additional measurement equipment needed
  - List of registered mobile handsets

## Networking technologies and protocols

- Network technologies
  - [VLAN \(IEEE 802.1q\)](#)
- Network protocols
  - [DHCP](#), [NTP](#), [LLDP-MED](#), [HTTP](#), [LDAP](#)
- Secure network protocols
  - [TLS V1.2](#), [HTTPS](#)

## Directory support

- Local directory with up to 3,000 entries
- LDAP (server-based directory)
- XML phonebook support

## DECT technology and features

- Standard: DECT<sup>4</sup>
  - Authentication/encryption of base and handset
  - Seamless handover and roaming using DECT or LAN synchronisation (IEEE1588)
  - Wideband audio
- Frequency band
  - Europe: 1,880 - 1,900 MHz
  - USA: 1,920 - 1,930 MHz
- Output power
  - Europe: < 250 mW
  - USA: < 100 mW
- Coverage
  - Up to 50 m indoor range
  - Up to 300 m outdoor range
- Multicell installation
  - Handsets: up to 4,000<sup>1</sup>
  - Base stations: up to 1,000<sup>1</sup>
  - Repeaters: up to 100
  - Narrowband calls: up to 8
  - Wideband calls: up to 4
- Single-cell installation
  - Narrowband calls: up to 10
  - Wideband calls: up to 5
- Related features
  - Software upgrade over the air (SUOTA)
  - Alarm server compatibility

- Beacon support

## Environmental conditions

- Operating ambient temperature: -20 °C - +60 °C

## Package contents

- Hardware
  - DECT base station M900 outdoor
  - Housing
  - Wall mount kit
- Documentation:
  - [Quick Installation Guide](#)
  - Information sheets (security, standards)

## Interoperability

- [Certified VoIP partner](#)

## Snom accessories and compatible devices

- Power adapter
  - EU & UK: M900 PSU (PN 00004439)
  - Americas: M900 PSU (PN 00004440)
  - UK: M900 PSU Clip (PN 00003931)
- PoE injector<sup>2</sup>
  - [A5 \(EoS\) \(PN 00004065\)](#)<sup>5</sup>
  - [A5E \(PN 00004079\)](#)
- DSP codec module
  - A900 (PN 00004445)
- DECT repeater
  - [M5 \(EoS, FW < 610.x\) \(PN 00003930\)](#)<sup>5</sup>
  - [M6 \(FW > 530.9\) \(PN 00004638, PN 00004639, PN 00004640\)](#)
- DECT handset
  - [Please check compatibility list](#)

## Series overview



<sup>1</sup> up to 16,000 registered handsets and 4,000 base station with a future FW update

<sup>2</sup> If PoE is not available

<sup>3</sup> Enabled by DSP module A900

<sup>4</sup> DECT devices manufactured for the USA and Canada are marketed as DECT 6.0

<sup>5</sup> [EoS \(End of sale\)](#)

## Disclaimer

Further information: [Snom M900 Outdoor webpage](#) | [Snom Service Hub](#) | [Type approval](#) | [Warranty information](#) | [Company locations](#)

Snom, the names of Snom products, and Snom logos are trademarks owned by Snom Technology GmbH. All product specifications are subject to change without notification. Snom Technology GmbH reserves the right to revise and change this document at any time, without being obliged to announce such revisions or changes beforehand or after the fact. Although due care has been taken in the compilation and presentation of the information in this document, the data upon which it is based may have changed in the meantime. Snom therefore disclaims all warranties and liability for the accurateness, completeness, and currentness of the information published, except in the case of intention or gross negligence on the part of Snom or where liability arises due to binding legal provisions.